



## La plateforme GUYANENSIS interconnexion des bases de données de biodiversité

Pierre Solbès, Christian Gendreau, Jérôme Murienne

Laboratoire EDB Evolution et Diversité Biologique, Toulouse, France  
GBIF, Global Biodiversity Information Facility, Copenhagen, Denmark

A decorative vertical bar on the left side of the slide, featuring a repeating pattern of white biological icons (insects, a frog, and a flower) on a brown background with a subtle circular pattern.

# La plateforme Guyanensis

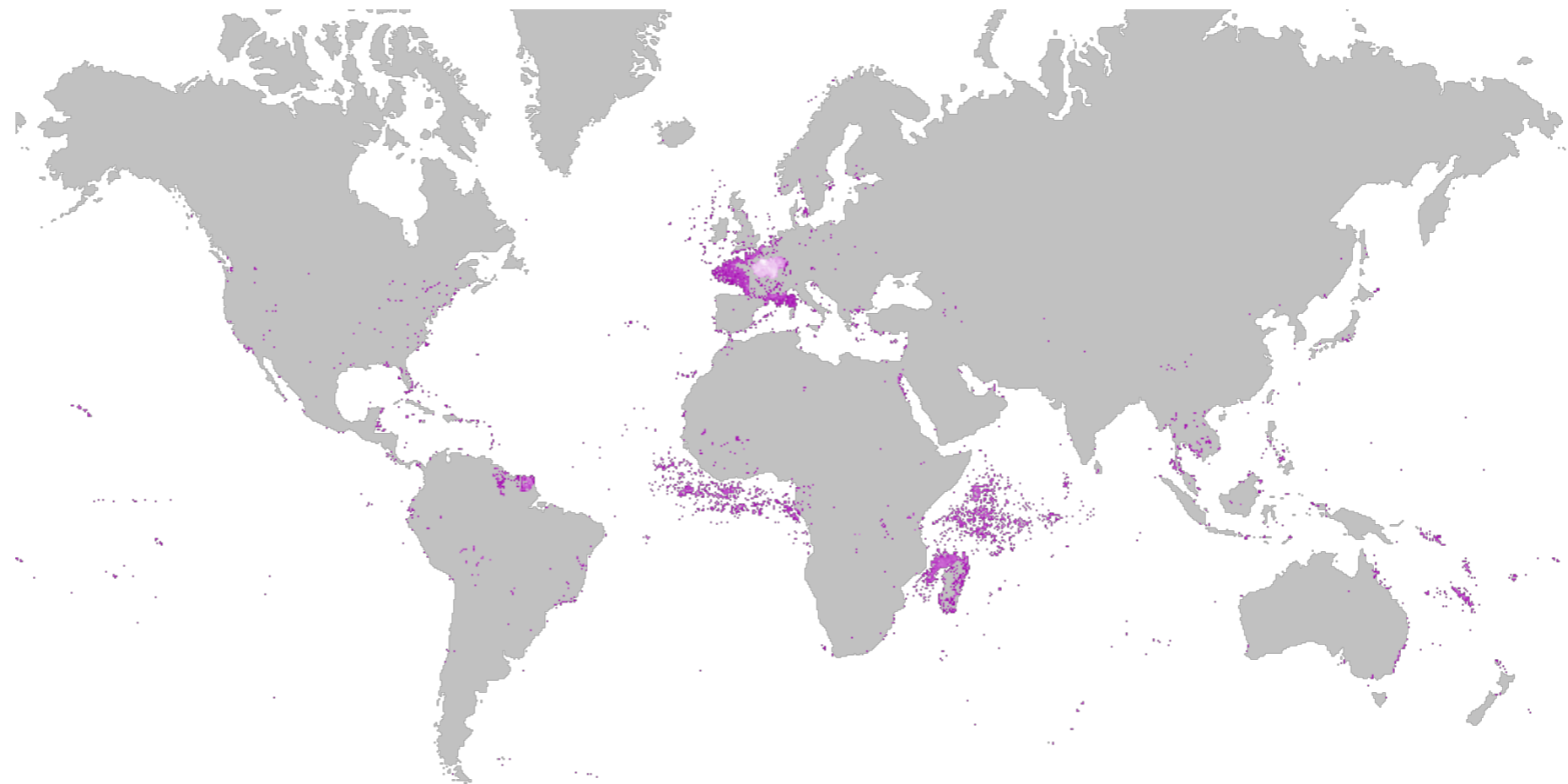
## Plan

- Objectifs du CEBA
- Démarche et implémentation
- Perspectives d'évolution et de collaborations
- Usages

# Place de la Guyane dans la recherche française

## 1ere zone d'étude tropicale

- en nombre d'unité de recherche y travaillant
- en nombre de données produites



<http://www.cnrs.fr/fr/pdf/inee/prospective-eco-tropicale/>

# Le Labex CEBA

## Composition



Equipes en Guyane

UMR ECOFOG  
Kourou

herbier IRD de Guyane  
Cayenne

USR mixte LEEISA  
Cayenne

Institut Pasteur Guyane  
Cayenne

EA EPaT  
Cayenne

UMR CRPLC  
Cayenne

Equipes en France Métropolitaine

UMR BIOGECO  
Cestas

UMR AMAP  
Montpellier

UMR EDB -DEEP  
Toulouse

UPR ICSN- PSN  
Gif sur Yvette

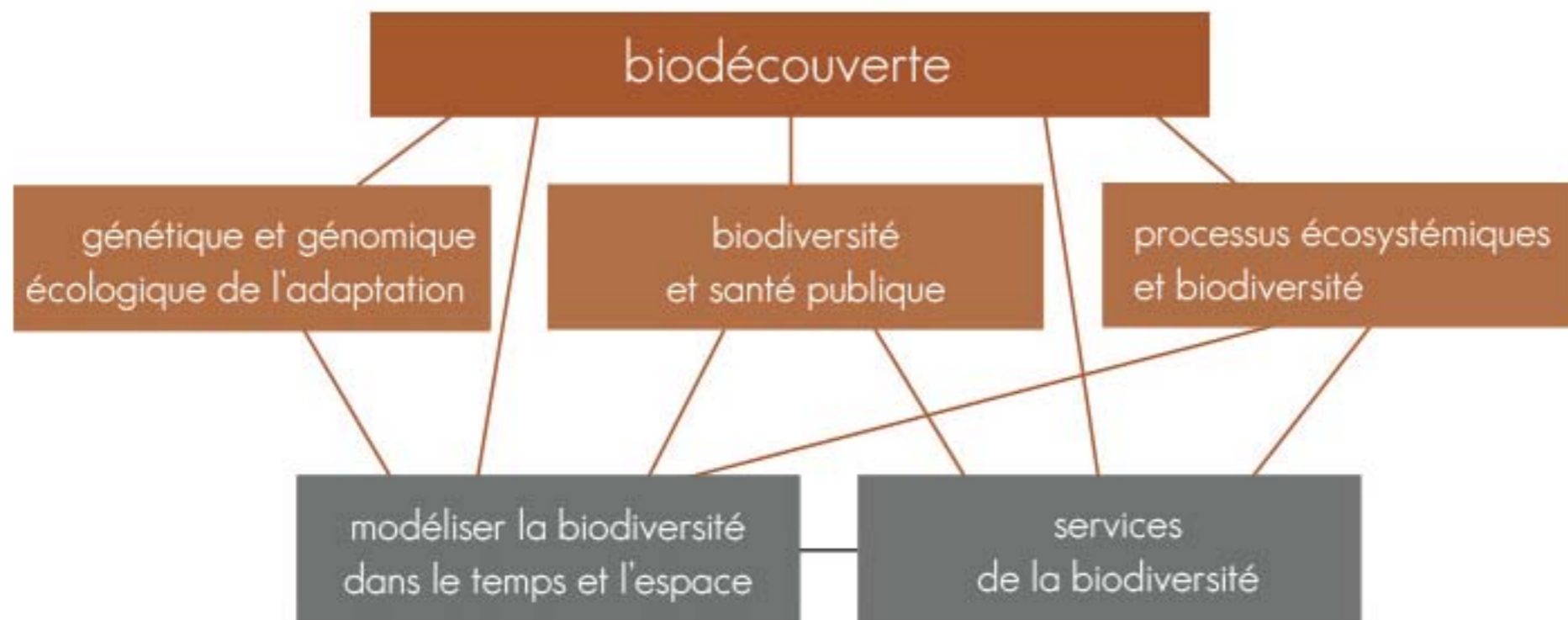
UMR MIGEVEC - DySMI  
Montpellier

UMR EEF  
Nancy

UMR ISEM  
Montpellier

# Le Labex CEBA

## Objectifs scientifiques





## Le Labex CEBA

### Projets stratégiques

DIADEMA  
2013-2015  
C. Baraloto

DIAMOND  
2016-2019  
J. Murienne & J. Orivel

Dissecting and monitoring Amazonian diversity

# Le Labex CEBA

## Projets stratégiques



Qu'est ce qui a été collecté?  
Où et par qui?

Mobiliser l'information primaire de biodiversité (existante et future)

# Démarche et implémentation

## Les standards



Dublin core  
1995



standards définissant les termes et concepts

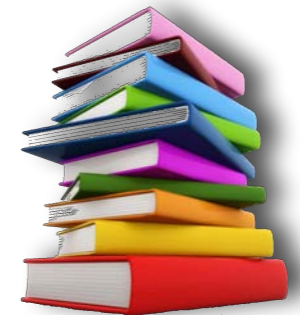


# Démarche et implémentation

## Les standards



Dublin core  
1995



standards définissant les termes et concepts



Darwin core  
1998



Darwin Core: an evolving community-developed biodiversity data standard. Wiczoreck et al. PLoS one 2012. doi: 10.1371/journal.pone.0029715

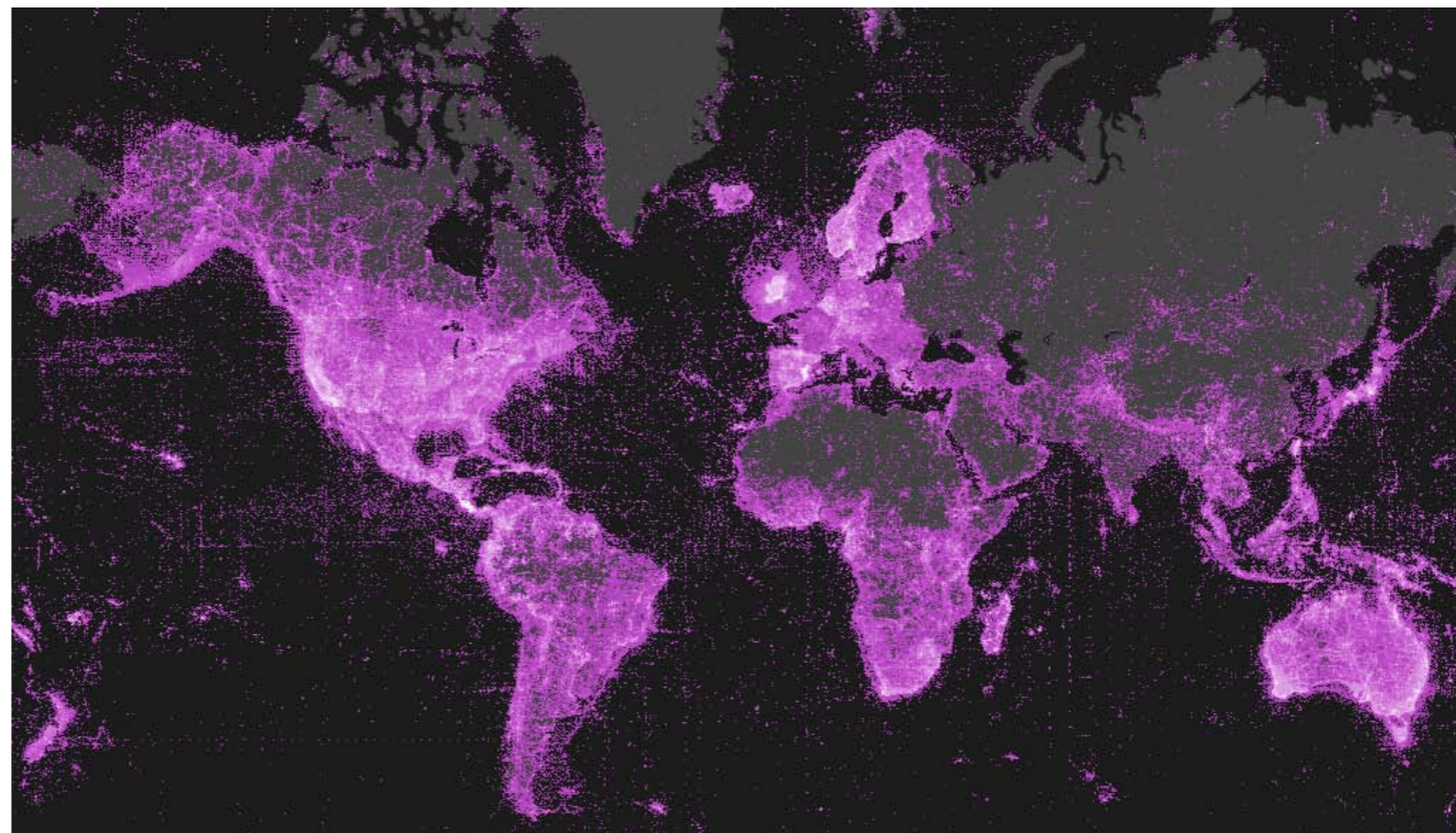
# Démarche et implémentation

## Le GBIF

Global Biodiversity Information Facility  
créé en 2001

54 pays participants  
(dont la France depuis 2001 et le Brésil depuis 2012)

600+ millions de données



# Démarche et implémentation

## La plateforme Canadensys

The screenshot displays the Canadensys web application interface. At the top, there is a dark red header with the Canadensys logo, the text "data | community", and a language selector for "Français". Below the header is a navigation bar with buttons for "explorer", "repository", "tools", and "vascan".

The main content area shows "All 2,538,828 records" (showing only georeferenced records: 1,988,319). There are three view options: "Map view", "Table view", and "Stats view". To the right of these are buttons for "Search", "Download", and "Display".

The central part of the interface is a map of North America, including Alaska, Canada, and Greenland, with numerous red dots representing data points. The map includes standard navigation controls like a compass, zoom in/out, and a "Map/Satellite" toggle.

On the right side, there is a "Create a new filter" sidebar. It features a search input field for "Scientific name" and an "Add filter" button. Below this is a list of filters with their corresponding record counts:

Passer domesticus domesticus	7425
Megaptera novaeangliae	7410
Anthomyiidae	7192
Apallates	7124
Phocoena phocoena	6841
Delia platura	6699
Chrysotus	5901
Incertella	5806
Conioscinella	5183
Peromyscus maniculatus	4704

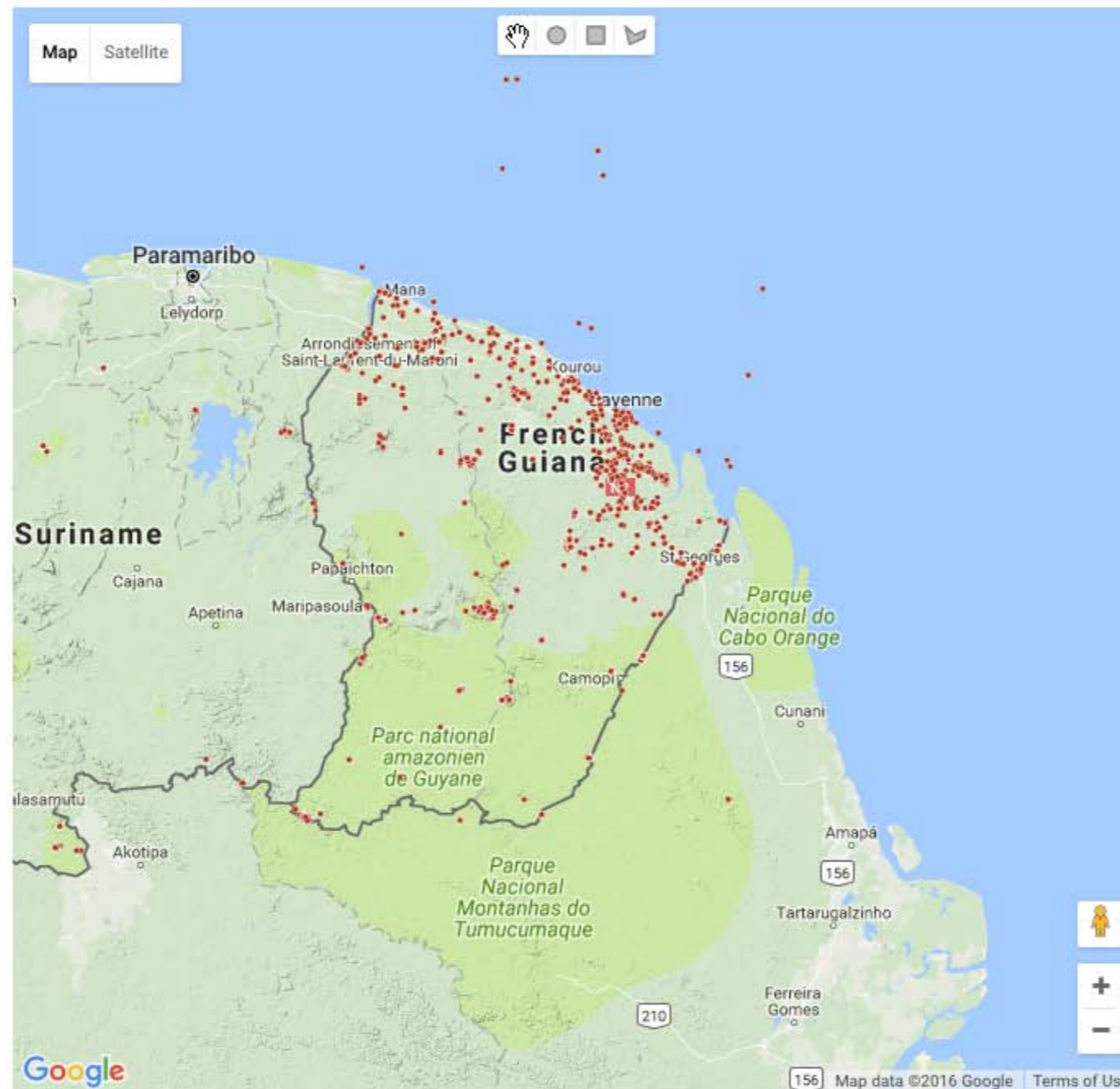
Below the list, there is a "Current filters" section stating "No filters selected." and a "search current filters" button.

[www.canadensys.net](http://www.canadensys.net)

(gratuit et open source)

# Démarche et implémentation

## La plateforme Guyanensis



### Create a new filter

Scientific name

Filter starts with:

gen. sp.	1537
Paecilaema curvipes	454
Adenomera andreae	294
Stygnidius inflatus	259
Marasmius sp.	256
gen. MS23	252
Unknown sp.	232
Mycena sp.	210
gen. MS5	164
Entoloma sp.	133

### Current filters

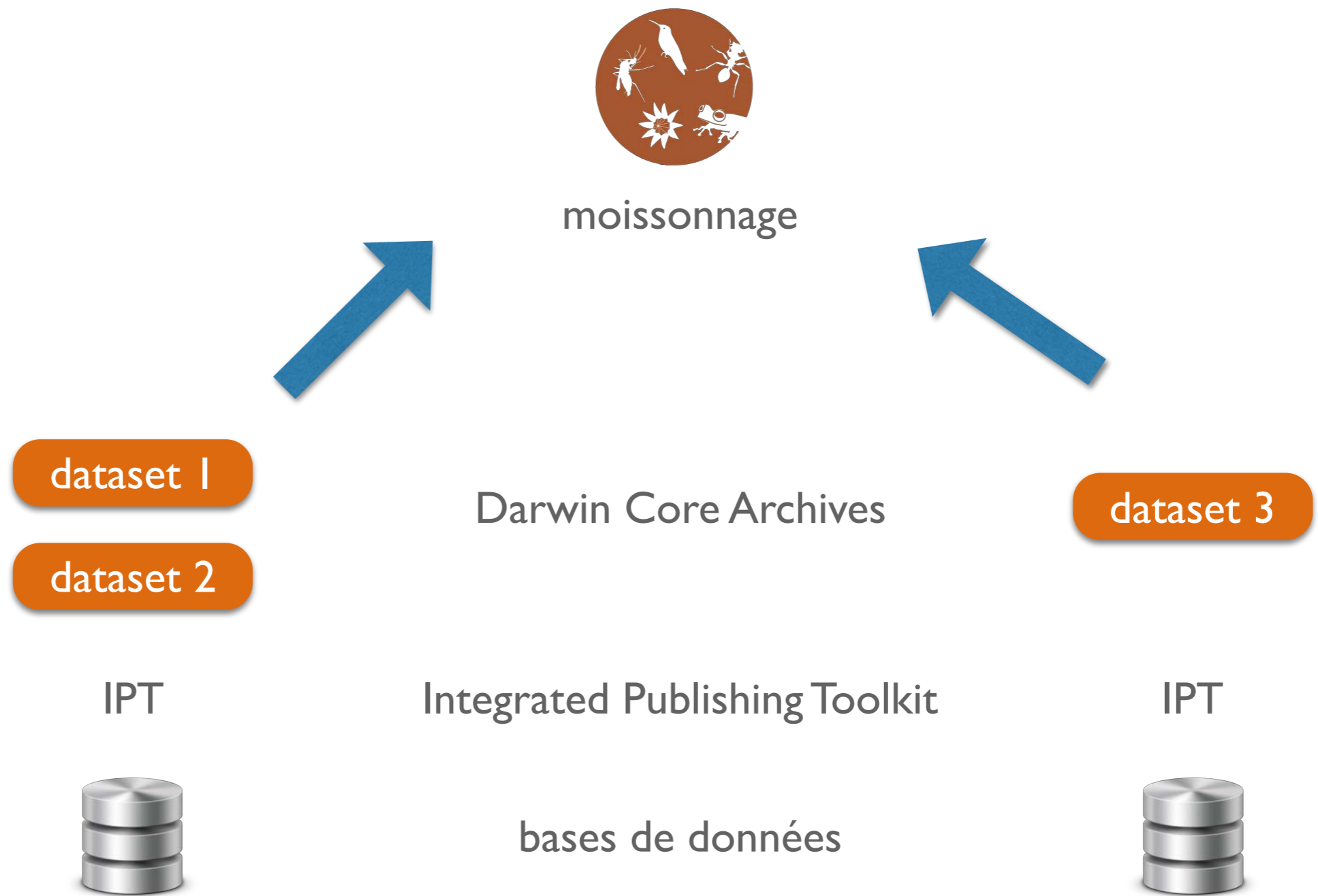
No filters selected.

<http://guyanensis.ups-tlse.fr>

fonctionnel depuis 2014

# Démarche et implémentation

La plateforme Guyanensis



The GBIF Intergrated Publishing Toolkit. Robertson et al.  
PLoS one 2014. doi: 10.1371/journal.pone.0102623

# Démarche et implémentation

## La plateforme Guyanensis

Biodiversity Data Journal 2: e4244  
doi: 10.3897/BDJ.2.e4244

Data Paper

### An occurrence records database of French Guiana harvestmen (Arachnida, Opiliones)

Sébastien Cally<sup>1</sup>, Pierre Solbès<sup>1</sup>, Bernadette Grosao<sup>2</sup>, Jérôme Murienne<sup>1</sup>  
<sup>1</sup> UMR5174 CNRS/UPS/ENFA, Toulouse, France

Corresponding author: Sébastien Cally ([sebastien.cally@univ-tlse3.fr](mailto:sebastien.cally@univ-tlse3.fr)), Jérôme Murienne ([jerome.murienne@univ-tlse3.fr](mailto:jerome.murienne@univ-tlse3.fr))  
Academic editor: Adriano Kury  
Received: 13 Nov 2014 | Accepted: 21 Dec 2014 | Published: 25 Dec 2014  
Citation: Cally S, Solbès P, Grosao B, Murienne J (2014) An occurrence records database of French Guiana harvestmen (Arachnida, Opiliones). Biodiversity Data Journal 2: e4244. doi: 10.3897/BDJ.2.e4244

#### Abstract

This dataset provides information on specimens of harvestmen (Arthropoda, Arachnida, Opiliones) collected in French Guiana. Field collections have been initiated in 2012 within the framework of the CEnter for the Study of Biodiversity in Amazonia (CEBA: [www.labex-ceba.fr/en/](http://www.labex-ceba.fr/en/)). This dataset is a work in progress. Occurrences are recorded in an online database stored at the EDB laboratory after each collecting trip and the dataset is updated on a monthly basis. Voucher specimens and associated DNA are also stored at the EDB laboratory until deposition in natural history Museums. The latest version of the dataset is publicly and freely accessible through our Integrated Publication Toolkit at [http://130.120.204.55:8080/ipt/resource.do?r=harvestmen\\_of\\_french\\_guiana](http://130.120.204.55:8080/ipt/resource.do?r=harvestmen_of_french_guiana) or through the Global Biodiversity Information Facility data portal at <http://www.gbif.org/dataset/3c9e2297-bf20-4827-928e-7c7eef9432c>.

#### Keywords

Occurrence, French Guiana, Neotropics, Opiliones.

© Cally S et al. This is an open access article distributed under the terms of the Creative Commons Attribution License (CC BY 4.0), which permits unrestricted use, distribution, and reproduction in any medium, provided the original author and source are credited.

ZooKeys 532: 107–115 (2015)  
doi: 10.3897/zookeys.532.6176  
<http://zookeys.pensoft.net>

DATA PAPER



### Online database for mosquito (Diptera, Culicidae) occurrence records in French Guiana

Stanislas Talaga<sup>1</sup>, Jérôme Murienne<sup>2</sup>, Alain Dejean<sup>1,3</sup>, Céline Leroy<sup>4</sup>

<sup>1</sup> CNRS; Laboratoire Ecologie des Forêts de Guyane (Ecofog; UMR 8172), Campus agronomique, 97310, Kourou, French Guiana <sup>2</sup> CNRS/UPS/ENFA; Laboratoire Evolution et Diversité Biologique (EDB; UMR 5174), Université de Toulouse, 118 route de Narbonne, 31062, Toulouse, France <sup>3</sup> CNRS/UPS/INP; Laboratoire Ecologie fonctionnelle et Environnement (Ecolab; UMR 5245), Université de Toulouse, 118 route de Narbonne, 31062, Toulouse, France <sup>4</sup> IRD; Laboratoire de botanique et Modélisation de l'Architecture des Plantes et des végétations (AMAP; UMR 123), Boulevard de la Lironde, TA A-51/PS2, 34398, Montpellier, France

Corresponding author: Stanislas Talaga (email address)

Academic editor: G. Křížek | Received 14 August 2015 | Accepted 12 October 2015 | Published 5 November 2015

<http://zoobank.org/769F20D3-45EA-44CF-838D-9CD21A7BA661>

Citation: Talaga S, Murienne J, Dejean A, Leroy C (2015) Online database for mosquito (Diptera, Culicidae) occurrence records in French Guiana. ZooKeys 532: 107–115. doi: 10.3897/zookeys.532.6176

#### Abstract

A database providing information on mosquito specimens (Arthropoda: Diptera: Culicidae) collected in French Guiana is presented. Field collections were initiated in 2013 under the auspices of the CEnter for the study of Biodiversity in Amazonia (CEBA: <http://www.labexceba.fr/en/>). This study is part of an ongoing process aiming to understand the distribution of mosquitoes, including vector species, across French Guiana. Occurrences are recorded after each collecting trip in a database managed by the laboratory Evolution et Diversité Biologique (EDB), Toulouse, France. The dataset is updated monthly and is available online. Voucher specimens and their associated DNA are stored at the laboratory Ecologie des Forêts de Guyane (Ecofog), Kourou, French Guiana. The latest version of the dataset is accessible through EDB's Integrated Publication Toolkit at [http://130.120.204.55:8080/ipt/resource.do?r=mosquitoes\\_of\\_french\\_guiana](http://130.120.204.55:8080/ipt/resource.do?r=mosquitoes_of_french_guiana) or through the Global Biodiversity Information Facility data portal at <http://www.gbif.org/dataset/5a8aa2ad-261c-4f61-a98e-26dd752fe1c5> It can also be viewed through the Guyanensis platform at <http://guyanensis.univ-tlse.fr>

#### Keywords

Occurrence, French Guiana, Neotropics, mosquitoes, diversity

Copyright Stanislas Talaga et al. This is an open access article distributed under the terms of the Creative Commons Attribution License (CC BY 4.0), which permits unrestricted use, distribution, and reproduction in any medium, provided the original author and source are credited.

Datapapers: publication des métadonnées

Ecological Metadata Language - ISO 19115 / 19139



## Démarche et implémentation

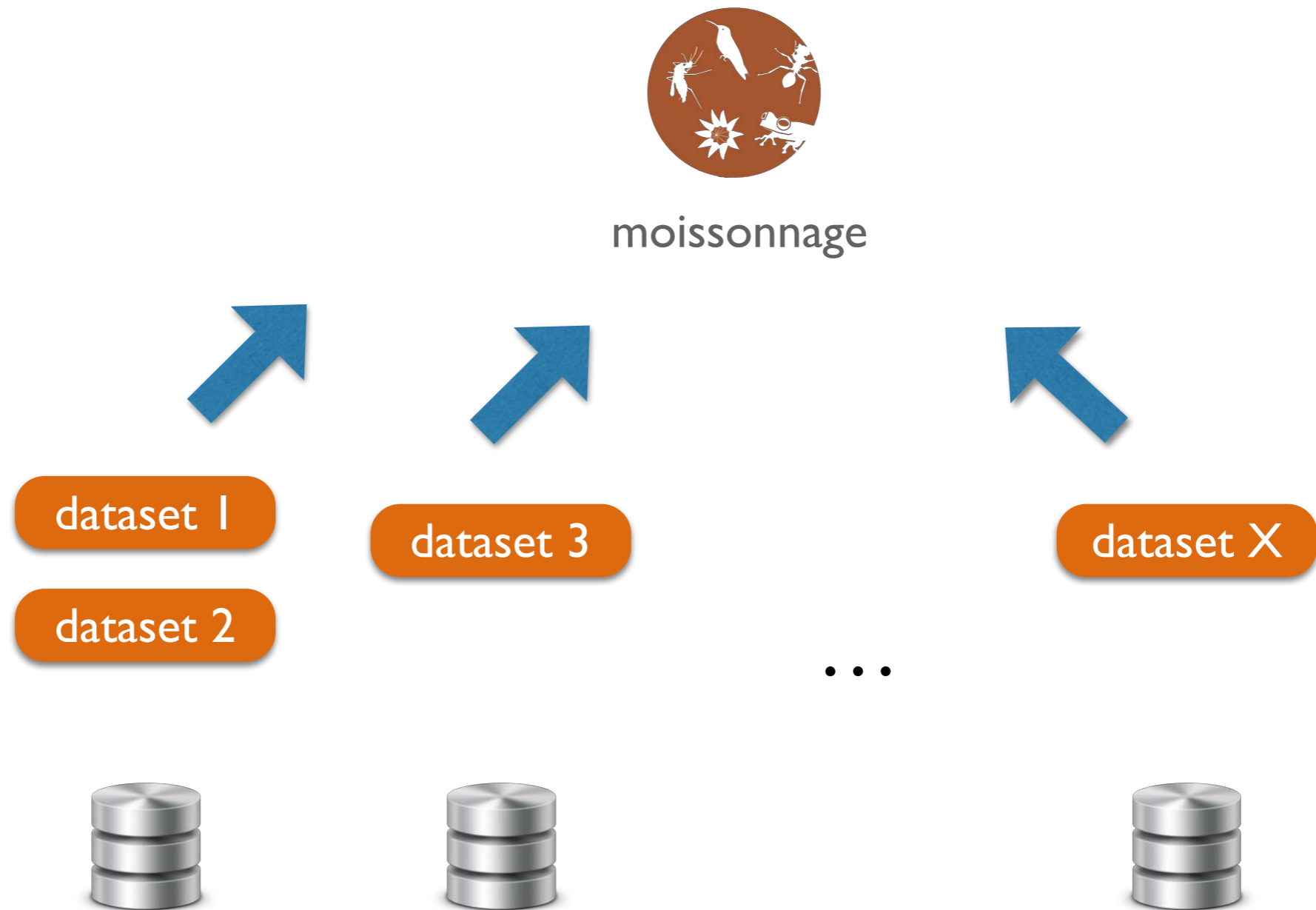
### La plateforme Guyanensis

- Accès direct aux données brutes (L311-1 CRPA)
  - pas de dégradation (maillage)
  - traçabilité
- Accès aux métadonnées (L312-1-1 CRPA)
- Standards internationaux (L300-4 CRPA)
  - interopérabilité avec d'autres initiatives
- Mises à jour automatisées (L312-1-1 CRPA)

Loi Lemaire pour une République numérique  
Amendements au Code des Relations entre le Publique et l'Administration

# Perspectives d'évolution et de collaborations

Mobilisation de l'information existante

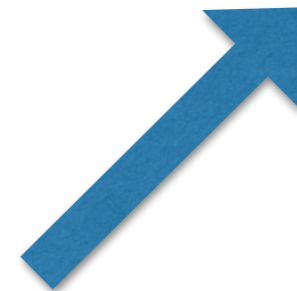


Connexion d'autres jeux de données issus de la recherche



# Perspectives d'évolution et de collaborations

Flux d'information entre plateformes



dataset I

Darwin Core Archives



# Perspectives d'évolution et de collaborations

Mobilisation de l'information existante

associations



administrations



privés



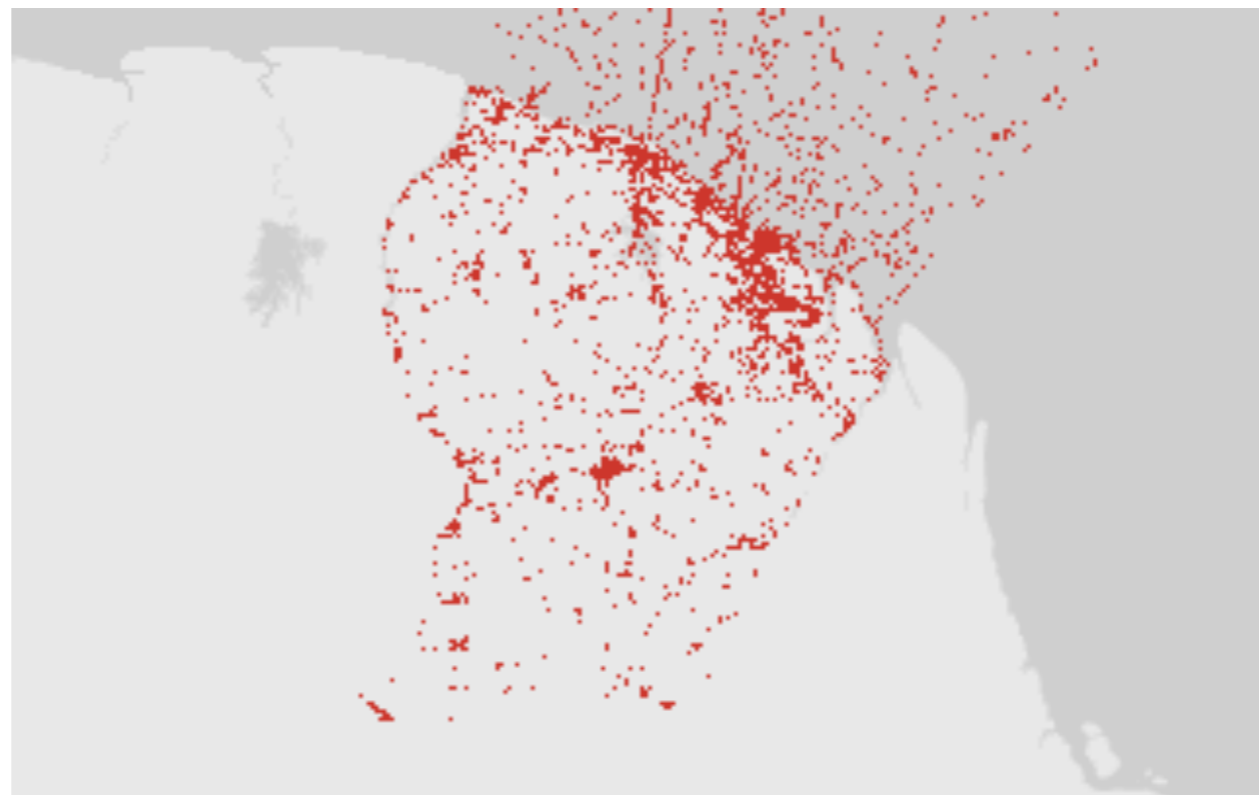
?



Connexion d'autres jeux de données issus d'autres fournisseurs

# Usages

Analyse et modélisation des patrons de biodiversité



DIAMOND  
2016-2019  
J. Murienne & J. Orivel

## Remerciements

Christian Gendreau (Canadensys, GBIF) et Pierre Solbes (EDB)



Anne-Sophie Archambeau, Marie-Elise Lecoq, Sophie Pamerlon.



Laurent Poncet, Julien Touroult, Olivier Gargominy



Cécille Callou



laboratoire  
d'excellence

ce



centre d'étude de la

bd

biodiversité  
amazonienne